

# Airport Arrival Performance Comparison

Sorted by airport and summarized by time of day

## Top 30 North American Airports

Jun 1, 2007 - Jun 30, 2007

**Report Date:** July 09, 2007

**Page Count:** 10 (including cover page)

**Query Parameters:**

Date Range

Starting: 6/1/2007

Ending: 6/30/2007

Airports: Top 30 North American Airports

Carriers: All Carriers

Include 'all cargo' carriers? No

Include non-scheduled flights? No

Delay Thresholds:

Late: Flight delayed 15+ minutes

Very Late: Flight delayed 30+ minutes

Excessive: Flight delayed 45+ minutes



**NATIONAL BUSINESS  
TRAVEL ASSOCIATION**

*Connecting the Business Travel World*



## Abstract

This FlightStats report provides detailed ontime arrival performance metrics for all carriers serving the specified airports. Performance metrics include the number of ontime and late arrivals along with the delay statistics of average delay, standard deviation, minimum delay and maximum delay. The information can be summarized by airport or by airport and time of day. Primary query parameters include: airport list, date range, carrier filter, limit to scheduled flights only and include cargo-only carriers.

## Disclaimer

Customer acknowledges that all data provided or available through FlightStats is owned either by Conducive Technology, Lennoc BV or by third-party data providers (the "Owners"), and that Customer shall not acquire any ownership or interest whatsoever in such data. FlightStats data is solely for the benefit and purposes of Customer, and Customer is prohibited from publishing or selling, sublicensing, or otherwise transferring any part of the data to third parties, without written permission from Conducive.

The information contained in FlightStats reports has been compiled from various sources, and the Owners disclaim all responsibility for checking and verifying that the underlying data is 100% accurate. Consequently, the data is provided "as is" and Conducive provides no warranties of any type to Customer. Conducive and its data providers are not liable for any consequential damages or financial loss caused by any person's reliance on the data.

## Company Information

FlightStats  
Conducive Technology Corp.  
735 SW 20th Place  
Suite 220  
Portland, Oregon 97205 USA  
Tel. +1 (503) 274-0938  
Fax: +1 (503) 274-0939

Copyright© 2005-2007 Conducive Technology Corp.

Visit the FlightStats website at [www.flightstats.com](http://www.flightstats.com)

# Airport Arrival Performance Comparison

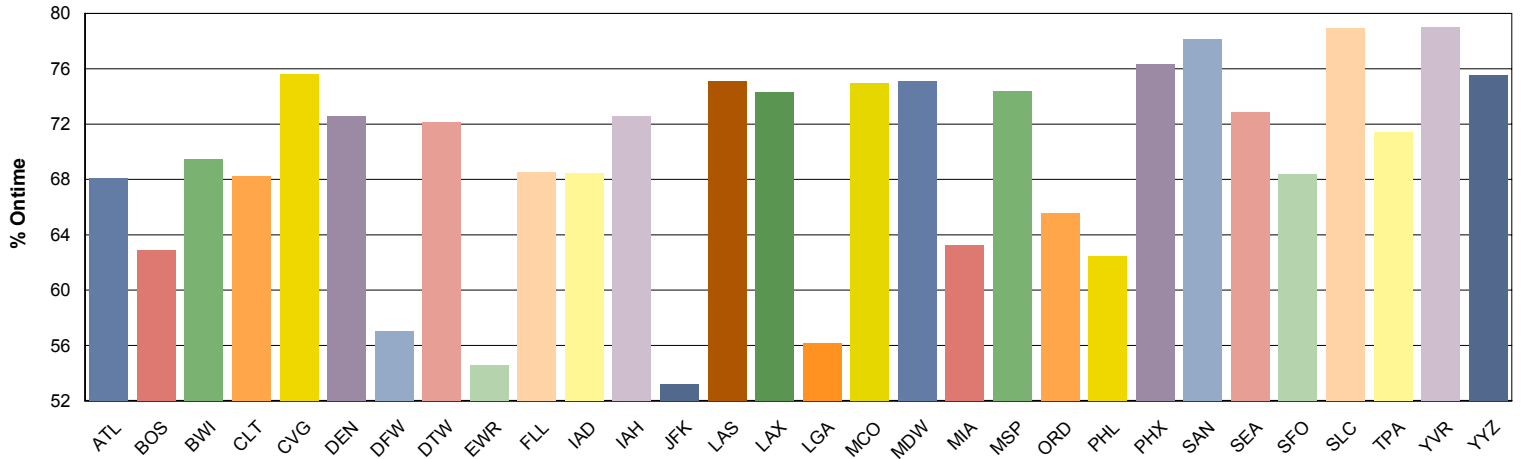
Sorted by airport and summarized by time of day

Date Range: Jun 1, 2007 - Jun 30, 2007

## Aggregate Summary

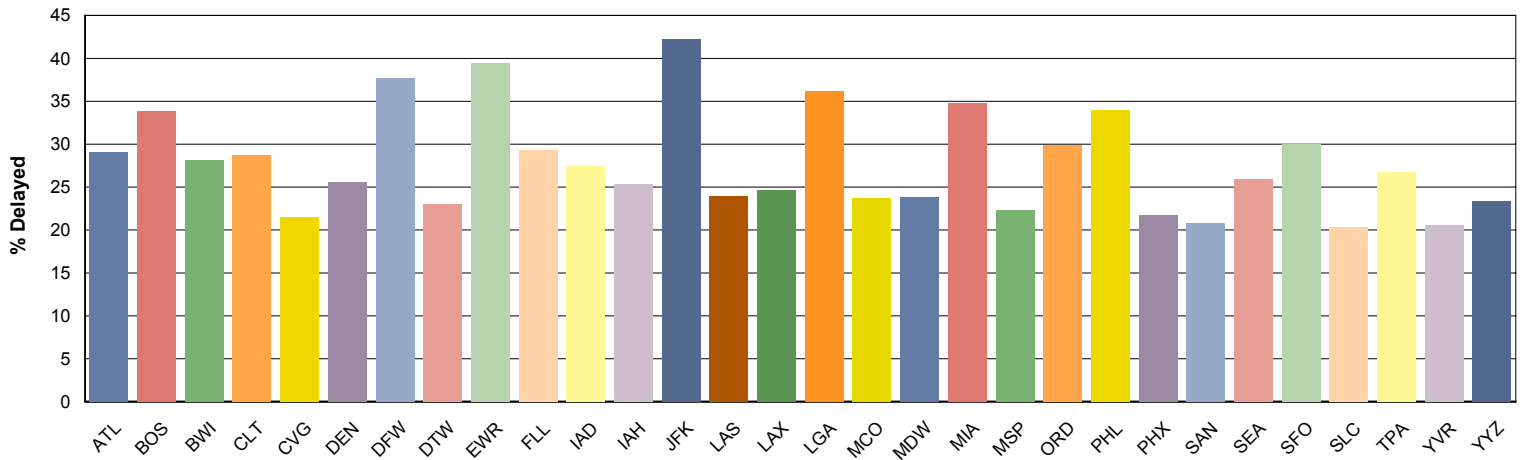
### Ontime Performance

% Ontime Arrivals



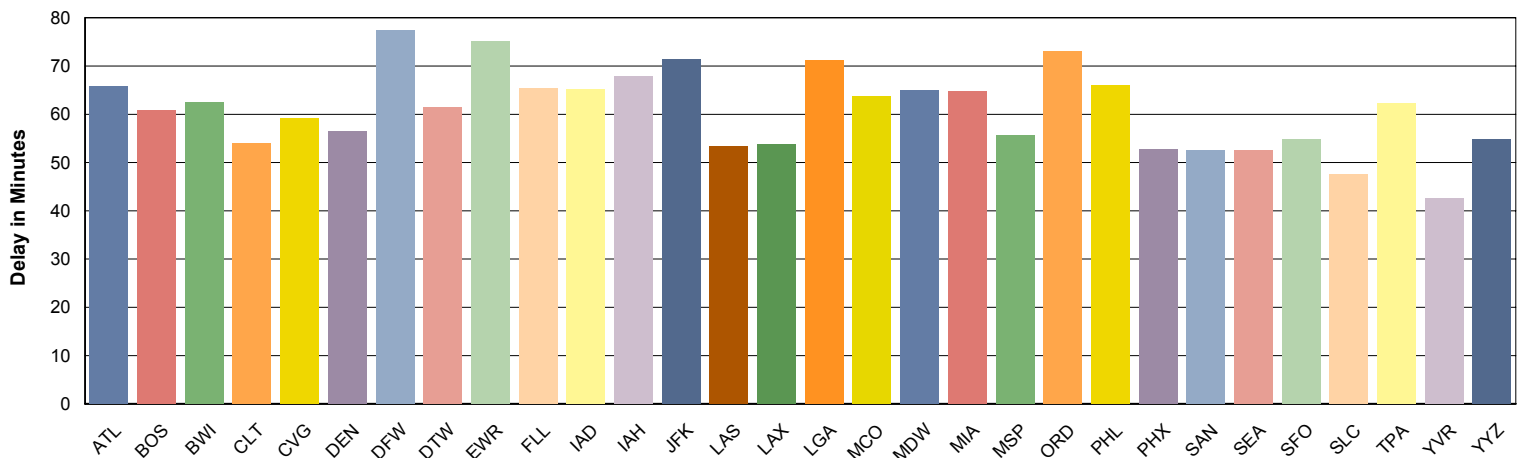
### Delayed Arrivals

% of Flights Delayed More than 15 Minutes



### Average Delay

Average Arrival Delay in Minutes



# Airport Arrival Performance Comparison

Sorted by airport and summarized by time of day

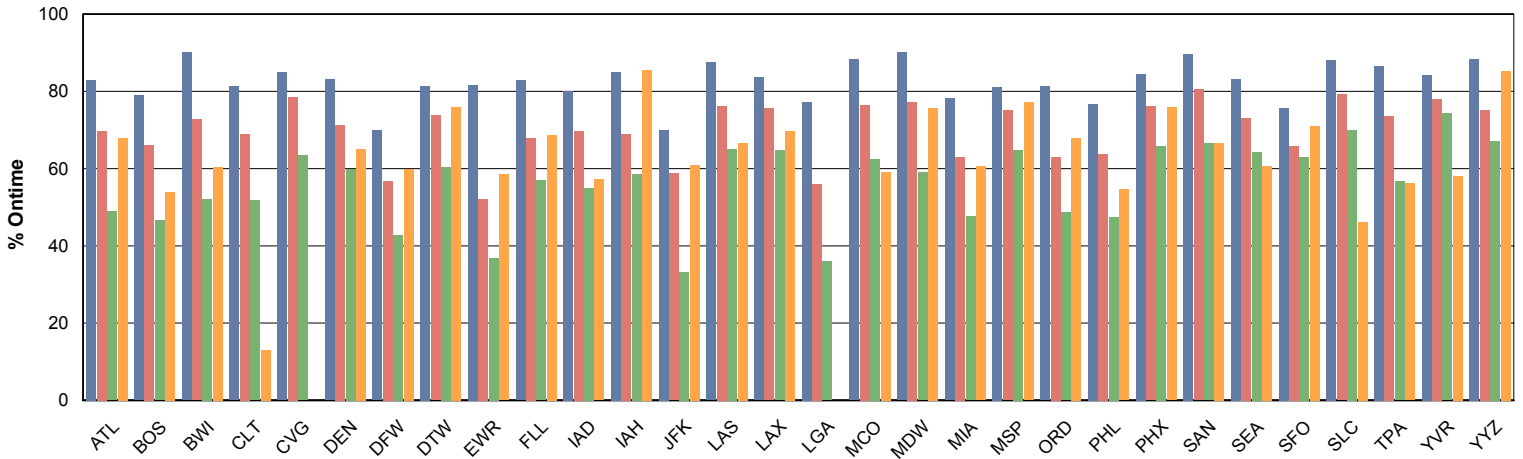
Date Range: Jun 1, 2007 - Jun 30, 2007

## Summary by Time of Day

Morning Afternoon Evening Late Night

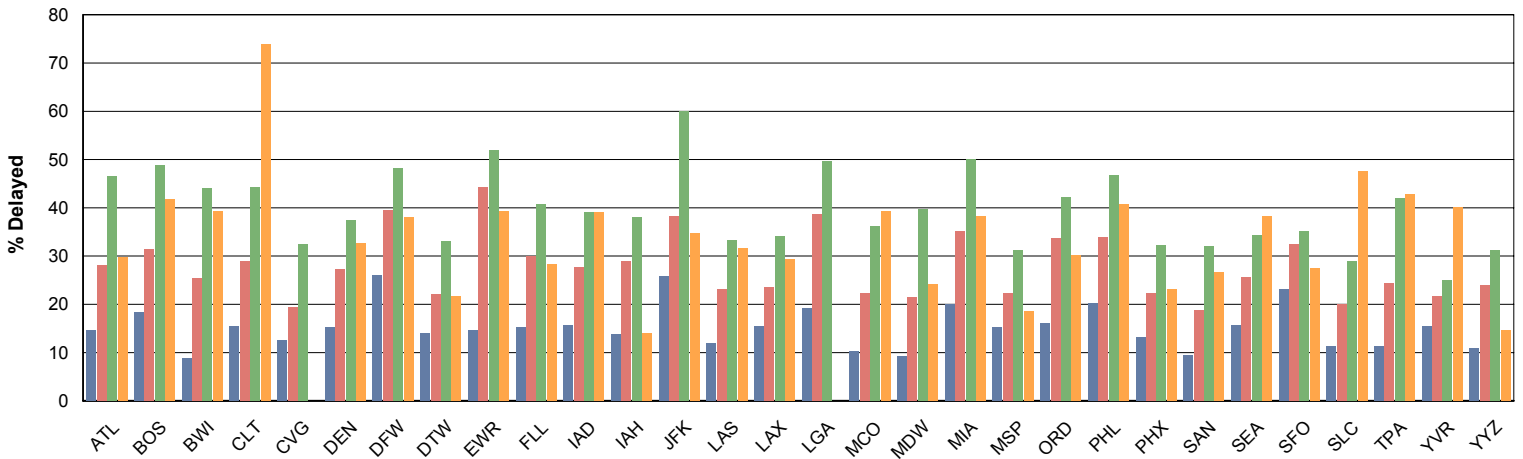
### Ontime Performance

% Ontime Arrivals



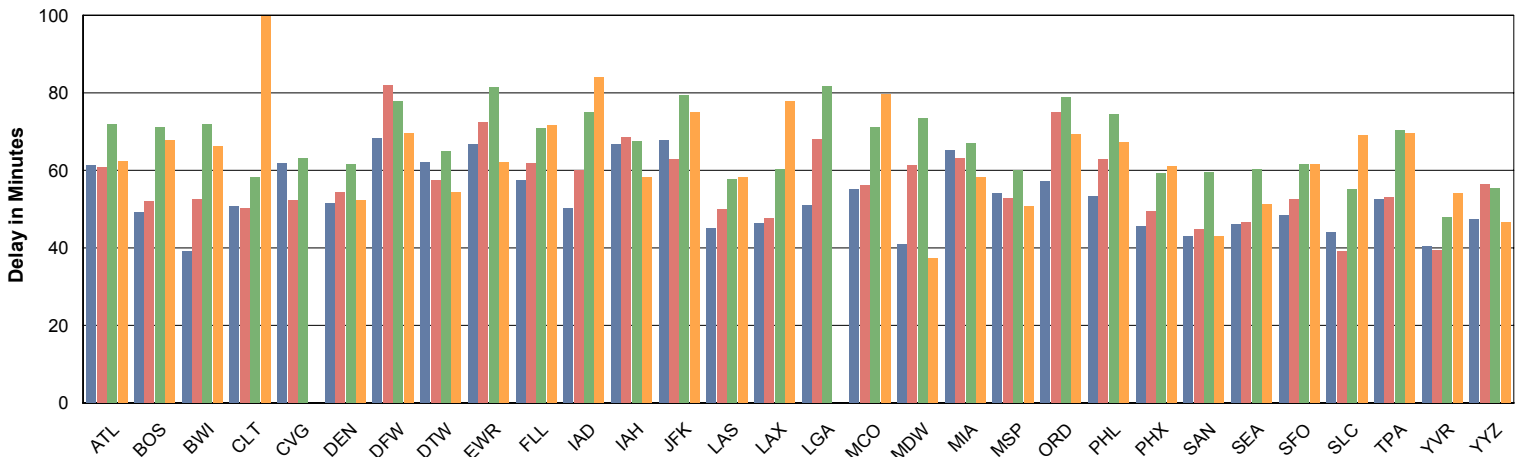
### Delayed Arrivals

% of Flights Delayed More than 15 Minutes



### Average Delay

Average Arrival Delay in Minutes



Morning Afternoon Evening Late Night

# Airport Arrival Performance Comparison

Sorted by airport and summarized by time of day

Date Range: Jun 1, 2007 - Jun 30, 2007



## Airports: Top 30 North American Airports

### ATL Hartsfield-Jackson Atlanta International Airport - Atlanta, GA United States

Arrival Time	Flights	Ontime	Late	Very Late	Excessive	Avg	SD	Max	Cancelled	Diverted
Night (00:00-6:00)	663	450 67.9%	71 10.7%	28 4.2%	98 14.8%	62	73	653	14 2.1%	2 0.3%
Morning (6:00-12:00)	13035	10816 83.0%	814 6.2%	326 2.5%	759 5.8%	61	74	676	315 2.4%	5 0.0%
Daytime (12:00-18:00)	16284	11367 69.8%	1762 10.8%	871 5.3%	1957 12.0%	61	62	829	268 1.6%	59 0.4%
Evening (18:00-24:00)	11654	5701 48.9%	1460 12.5%	970 8.3%	2991 25.7%	72	60	761	485 4.2%	47 0.4%
All Day	41636	28334 68.1%	4107 9.9%	2195 5.3%	5805 13.9%	66	63	829	1082 2.6%	113 0.3%

### BOS Logan International Airport - Boston, MA United States

Arrival Time	Flights	Ontime	Late	Very Late	Excessive	Avg	SD	Max	Cancelled	Diverted
Night (00:00-6:00)	304	164 53.9%	30 9.9%	28 9.2%	69 22.7%	68	56	310	13 4.3%	0 0.0%
Morning (6:00-12:00)	3685	2909 78.9%	343 9.3%	109 3.0%	228 6.2%	49	54	554	95 2.6%	1 0.0%
Daytime (12:00-18:00)	5552	3670 66.1%	697 12.6%	342 6.2%	702 12.6%	52	43	352	137 2.5%	4 0.1%
Evening (18:00-24:00)	4568	2126 46.5%	585 12.8%	406 8.9%	1243 27.2%	71	59	454	202 4.4%	6 0.1%
All Day	14109	8869 62.9%	1655 11.7%	885 6.3%	2242 15.9%	61	54	554	447 3.2%	11 0.1%

### BWI Balt./Wash. International Airport - Baltimore, MD United States

Arrival Time	Flights	Ontime	Late	Very Late	Excessive	Avg	SD	Max	Cancelled	Diverted
Night (00:00-6:00)	280	169 60.4%	28 10.0%	17 6.1%	65 23.2%	66	51	285	0 0.0%	1 0.4%
Morning (6:00-12:00)	2466	2221 90.1%	108 4.4%	45 1.8%	65 2.6%	39	31	236	27 1.1%	0 0.0%
Daytime (12:00-18:00)	3834	2789 72.7%	418 10.9%	177 4.6%	375 9.8%	52	52	423	60 1.6%	15 0.4%
Evening (18:00-24:00)	3498	1823 52.1%	417 11.9%	279 8.0%	843 24.1%	72	62	470	115 3.3%	21 0.6%
All Day	10078	7002 69.5%	971 9.6%	518 5.1%	1348 13.4%	62	57	470	202 2.0%	37 0.4%

### CLT Douglas Airport - Charlotte, NC United States

Arrival Time	Flights	Ontime	Late	Very Late	Excessive	Avg	SD	Max	Cancelled	Diverted
Night (00:00-6:00)	23	3 13.0%	1 4.3%	3 13.0%	13 56.5%	100	74	285	3 13.0%	0 0.0%
Morning (6:00-12:00)	6240	5071 81.3%	512 8.2%	164 2.6%	288 4.6%	51	64	639	204 3.3%	1 0.0%
Daytime (12:00-18:00)	7021	4847 69.0%	887 12.6%	408 5.8%	737 10.5%	50	48	450	141 2.0%	1 0.0%
Evening (18:00-24:00)	5202	2695 51.8%	759 14.6%	449 8.6%	1092 21.0%	58	49	403	206 4.0%	1 0.0%
All Day	18486	12616 68.2%	2159 11.7%	1024 5.5%	2130 11.5%	54	52	639	554 3.0%	3 0.0%

### CVG Cincinnati/Northern Kentucky Airport - Cincinnati, OH United States

Arrival Time	Flights	Ontime	Late	Very Late	Excessive	Avg	SD	Max	Cancelled	Diverted
Morning (6:00-12:00)	3980	3379 84.9%	214 5.4%	77 1.9%	210 5.3%	62	78	725	98 2.5%	2 0.1%
Daytime (12:00-18:00)	4941	3879 78.5%	418 8.5%	197 4.0%	347 7.0%	52	54	483	90 1.8%	10 0.2%
Evening (18:00-24:00)	4206	2664 63.3%	472 11.2%	253 6.0%	642 15.3%	63	60	537	173 4.1%	2 0.0%
All Day	13127	9922 75.6%	1104 8.4%	527 4.0%	1199 9.1%	59	62	725	361 2.8%	14 0.1%

# Airport Arrival Performance Comparison

Sorted by airport and summarized by time of day

Date Range: Jun 1, 2007 - Jun 30, 2007



## Airports: Top 30 North American Airports

### DEN Denver International Airport - Denver, CO United States

Arrival Time	Flights	Ontime	Late	Very Late	Excessive	Avg	SD	Max	Cancelled	Diverted
Night (00:00-6:00)	43	28 65.1%	4 9.3%	4 9.3%	6 14.0%	52	34	130	0 0.0%	1 2.3%
Morning (6:00-12:00)	8814	7318 83.0%	705 8.0%	215 2.4%	428 4.9%	51	61	718	144 1.6%	4 0.0%
Daytime (12:00-18:00)	9277	6619 71.3%	1079 11.6%	494 5.3%	949 10.2%	54	54	873	123 1.3%	13 0.1%
Evening (18:00-24:00)	6400	3833 59.9%	854 13.3%	453 7.1%	1085 17.0%	61	54	403	166 2.6%	9 0.1%
All Day	24534	17798 72.5%	2642 10.8%	1166 4.8%	2468 10.1%	56	56	873	433 1.8%	27 0.1%

### DFW Dallas/Ft. Worth International Airport - Dallas, TX United States

Arrival Time	Flights	Ontime	Late	Very Late	Excessive	Avg	SD	Max	Cancelled	Diverted
Night (00:00-6:00)	419	251 59.9%	55 13.1%	26 6.2%	78 18.6%	70	89	737	7 1.7%	2 0.5%
Morning (6:00-12:00)	8351	5833 69.8%	702 8.4%	360 4.3%	1103 13.2%	68	66	678	319 3.8%	34 0.4%
Daytime (12:00-18:00)	11341	6432 56.7%	1133 10.0%	687 6.1%	2668 23.5%	82	78	523	362 3.2%	59 0.5%
Evening (18:00-24:00)	7430	3188 42.9%	689 9.3%	515 6.9%	2370 31.9%	78	57	568	655 8.8%	13 0.2%
All Day	27541	15704 57.0%	2579 9.4%	1588 5.8%	6219 22.6%	77	69	737	1343 4.9%	108 0.4%

### DTW Wayne County Airport - Detroit, MI United States

Arrival Time	Flights	Ontime	Late	Very Late	Excessive	Avg	SD	Max	Cancelled	Diverted
Night (00:00-6:00)	500	380 76.0%	49 9.8%	23 4.6%	36 7.2%	54	87	870	11 2.2%	1 0.2%
Morning (6:00-12:00)	5451	4437 81.4%	361 6.6%	114 2.1%	292 5.4%	62	81	628	243 4.5%	4 0.1%
Daytime (12:00-18:00)	7368	5434 73.8%	681 9.2%	317 4.3%	631 8.6%	57	64	487	281 3.8%	24 0.3%
Evening (18:00-24:00)	5587	3379 60.5%	619 11.1%	306 5.5%	925 16.6%	65	59	511	357 6.4%	1 0.0%
All Day	18906	13630 72.1%	1710 9.0%	760 4.0%	1884 10.0%	61	66	870	892 4.7%	30 0.2%

### EWR Newark Liberty International Airport - Newark, NJ United States

Arrival Time	Flights	Ontime	Late	Very Late	Excessive	Avg	SD	Max	Cancelled	Diverted
Night (00:00-6:00)	588	344 58.5%	59 10.0%	50 8.5%	122 20.7%	62	49	299	12 2.0%	1 0.2%
Morning (6:00-12:00)	3782	3089 81.7%	219 5.8%	87 2.3%	247 6.5%	67	73	687	139 3.7%	1 0.0%
Daytime (12:00-18:00)	7015	3660 52.2%	773 11.0%	589 8.4%	1736 24.7%	72	67	617	205 2.9%	52 0.7%
Evening (18:00-24:00)	4969	1834 36.9%	498 10.0%	408 8.2%	1670 33.6%	81	66	507	506 10.2%	53 1.1%
All Day	16354	8927 54.6%	1549 9.5%	1134 6.9%	3775 23.1%	75	67	687	862 5.3%	107 0.7%

### FLL Ft. Lauderdale International Airport - Fort Lauderdale, FL United States

Arrival Time	Flights	Ontime	Late	Very Late	Excessive	Avg	SD	Max	Cancelled	Diverted
Night (00:00-6:00)	339	233 68.7%	27 8.0%	16 4.7%	53 15.6%	72	62	308	10 2.9%	0 0.0%
Morning (6:00-12:00)	2359	1953 82.8%	164 7.0%	73 3.1%	122 5.2%	57	87	747	47 2.0%	0 0.0%
Daytime (12:00-18:00)	3498	2375 67.9%	379 10.8%	215 6.1%	454 13.0%	62	60	442	48 1.4%	27 0.8%
Evening (18:00-24:00)	2740	1559 56.9%	334 12.2%	210 7.7%	575 21.0%	71	69	635	60 2.2%	2 0.1%
All Day	8936	6120 68.5%	904 10.1%	514 5.8%	1204 13.5%	65	68	747	165 1.8%	29 0.3%

# Airport Arrival Performance Comparison

Sorted by airport and summarized by time of day

Date Range: Jun 1, 2007 - Jun 30, 2007



## Airports: Top 30 North American Airports

### IAD Dulles International Airport - Washington, DC United States

Arrival Time	Flights	Ontime	Late	Very Late	Excessive	Avg	SD	Max	Cancelled	Diverted
Night (00:00-6:00)	217	124 57.1%	19 8.8%	19 8.8%	47 21.7%	84	77	397	7 3.2%	1 0.5%
Morning (6:00-12:00)	4120	3304 80.2%	305 7.4%	115 2.8%	224 5.4%	50	51	616	169 4.1%	3 0.1%
Daytime (12:00-18:00)	4650	3244 69.8%	472 10.2%	231 5.0%	588 12.6%	60	58	468	87 1.9%	28 0.6%
Evening (18:00-24:00)	3883	2137 55.0%	400 10.3%	236 6.1%	878 22.6%	75	62	418	221 5.7%	11 0.3%
All Day	12870	8809 68.4%	1196 9.3%	601 4.7%	1737 13.5%	65	60	616	484 3.8%	43 0.3%

### IAH George Bush Intercontinental Airport - Houston, TX United States

Arrival Time	Flights	Ontime	Late	Very Late	Excessive	Avg	SD	Max	Cancelled	Diverted
Night (00:00-6:00)	249	213 85.5%	12 4.8%	9 3.6%	14 5.6%	58	60	320	1 0.4%	0 0.0%
Morning (6:00-12:00)	8581	7291 85.0%	474 5.5%	223 2.6%	486 5.7%	67	83	958	95 1.1%	12 0.1%
Daytime (12:00-18:00)	9562	6597 69.0%	923 9.7%	483 5.1%	1355 14.2%	69	65	572	125 1.3%	79 0.8%
Evening (18:00-24:00)	5389	3160 58.6%	623 11.6%	364 6.8%	1068 19.8%	67	63	964	169 3.1%	5 0.1%
All Day	23781	17261 72.6%	2032 8.5%	1079 4.5%	2923 12.3%	68	68	964	390 1.6%	96 0.4%

### JFK John F. Kennedy International Airport - New York, NY United States

Arrival Time	Flights	Ontime	Late	Very Late	Excessive	Avg	SD	Max	Cancelled	Diverted
Night (00:00-6:00)	781	476 60.9%	76 9.7%	67 8.6%	128 16.4%	75	80	722	31 4.0%	3 0.4%
Morning (6:00-12:00)	3951	2765 70.0%	371 9.4%	187 4.7%	466 11.8%	68	73	639	157 4.0%	5 0.1%
Daytime (12:00-18:00)	7241	4254 58.7%	1005 13.9%	560 7.7%	1205 16.6%	63	66	671	183 2.5%	34 0.5%
Evening (18:00-24:00)	5624	1871 33.3%	723 12.9%	573 10.2%	2075 36.9%	79	68	497	325 5.8%	57 1.0%
All Day	17597	9366 53.2%	2175 12.4%	1387 7.9%	3874 22.0%	71	69	722	696 4.0%	99 0.6%

### LAS McCarran International Airport - Las Vegas, NV United States

Arrival Time	Flights	Ontime	Late	Very Late	Excessive	Avg	SD	Max	Cancelled	Diverted
Night (00:00-6:00)	114	76 66.7%	13 11.4%	7 6.1%	16 14.0%	58	47	209	2 1.8%	0 0.0%
Morning (6:00-12:00)	4572	4000 87.5%	288 6.3%	104 2.3%	153 3.3%	45	50	589	27 0.6%	0 0.0%
Daytime (12:00-18:00)	5853	4465 76.3%	621 10.6%	272 4.6%	460 7.9%	50	52	574	32 0.5%	3 0.1%
Evening (18:00-24:00)	6238	4064 65.1%	788 12.6%	404 6.5%	888 14.2%	58	56	508	91 1.5%	3 0.0%
All Day	16777	12605 75.1%	1710 10.2%	787 4.7%	1517 9.0%	53	54	589	152 0.9%	6 0.0%

### LAX Los Angeles International Airport - Los Angeles, CA United States

Arrival Time	Flights	Ontime	Late	Very Late	Excessive	Avg	SD	Max	Cancelled	Diverted
Night (00:00-6:00)	466	325 69.7%	52 11.2%	17 3.6%	68 14.6%	78	92	600	2 0.4%	2 0.4%
Morning (6:00-12:00)	7832	6549 83.6%	662 8.5%	224 2.9%	321 4.1%	46	61	735	73 0.9%	3 0.0%
Daytime (12:00-18:00)	8168	6172 75.6%	877 10.7%	407 5.0%	639 7.8%	48	50	896	71 0.9%	2 0.0%
Evening (18:00-24:00)	8458	5469 64.7%	1100 13.0%	542 6.4%	1245 14.7%	60	63	679	98 1.2%	4 0.0%
All Day	24924	18515 74.3%	2691 10.8%	1190 4.8%	2273 9.1%	54	60	896	244 1.0%	11 0.0%

# Airport Arrival Performance Comparison

Sorted by airport and summarized by time of day

Date Range: Jun 1, 2007 - Jun 30, 2007



## Airports: Top 30 North American Airports

### LGA La Guardia Airport - New York, NY United States

Arrival Time	Flights	Ontime	Late	Very Late	Excessive	Avg	SD	Max	Cancelled	Diverted
Morning (6:00-12:00)	4922	3800 77.2%	445 9.0%	182 3.7%	316 6.4%	51	59	570	177 3.6%	2 0.0%
Daytime (12:00-18:00)	6198	3471 56.0%	726 11.7%	478 7.7%	1189 19.2%	68	67	625	305 4.9%	29 0.5%
Evening (18:00-24:00)	5093	1830 35.9%	522 10.2%	424 8.3%	1587 31.2%	82	65	509	675 13.3%	55 1.1%
All Day	16213	9101 56.1%	1693 10.4%	1084 6.7%	3092 19.1%	71	66	625	1157 7.1%	86 0.5%

### MCO Orlando International Airport - Orlando, FL United States

Arrival Time	Flights	Ontime	Late	Very Late	Excessive	Avg	SD	Max	Cancelled	Diverted
Night (00:00-6:00)	191	113 59.2%	16 8.4%	12 6.3%	47 24.6%	80	60	252	3 1.6%	0 0.0%
Morning (6:00-12:00)	3637	3209 88.2%	160 4.4%	73 2.0%	144 4.0%	55	55	461	50 1.4%	1 0.0%
Daytime (12:00-18:00)	5492	4203 76.5%	474 8.6%	256 4.7%	498 9.1%	56	51	404	37 0.7%	24 0.4%
Evening (18:00-24:00)	4329	2703 62.4%	429 9.9%	299 6.9%	837 19.3%	71	64	450	60 1.4%	1 0.0%
All Day	13649	10228 74.9%	1079 7.9%	640 4.7%	1526 11.2%	64	59	461	150 1.1%	26 0.2%

### MDW Midway Airport - Chicago, IL United States

Arrival Time	Flights	Ontime	Late	Very Late	Excessive	Avg	SD	Max	Cancelled	Diverted
Night (00:00-6:00)	169	128 75.7%	19 11.2%	12 7.1%	10 5.9%	37	22	115	0 0.0%	0 0.0%
Morning (6:00-12:00)	2636	2375 90.1%	127 4.8%	50 1.9%	67 2.5%	41	34	246	16 0.6%	1 0.0%
Daytime (12:00-18:00)	3265	2525 77.3%	288 8.8%	133 4.1%	279 8.5%	61	68	472	24 0.7%	16 0.5%
Evening (18:00-24:00)	2905	1713 59.0%	312 10.7%	202 7.0%	636 21.9%	73	67	452	36 1.2%	6 0.2%
All Day	8975	6741 75.1%	746 8.3%	397 4.4%	992 11.1%	65	65	472	76 0.8%	23 0.3%

### MIA Miami International Airport - Miami, FL United States

Arrival Time	Flights	Ontime	Late	Very Late	Excessive	Avg	SD	Max	Cancelled	Diverted
Night (00:00-6:00)	340	206 60.6%	49 14.4%	28 8.2%	53 15.6%	58	78	774	4 1.2%	0 0.0%
Morning (6:00-12:00)	3177	2483 78.2%	235 7.4%	117 3.7%	283 8.9%	65	81	828	58 1.8%	1 0.0%
Daytime (12:00-18:00)	4893	3082 63.0%	567 11.6%	385 7.9%	766 15.7%	63	63	848	87 1.8%	6 0.1%
Evening (18:00-24:00)	2904	1384 47.7%	422 14.5%	271 9.3%	759 26.1%	67	62	862	68 2.3%	0 0.0%
All Day	11314	7155 63.2%	1273 11.3%	801 7.1%	1861 16.4%	65	67	862	217 1.9%	7 0.1%

### MSP St Paul International Airport - Minneapolis, MN United States

Arrival Time	Flights	Ontime	Late	Very Late	Excessive	Avg	SD	Max	Cancelled	Diverted
Night (00:00-6:00)	341	263 77.1%	23 6.7%	18 5.3%	22 6.5%	51	42	183	15 4.4%	0 0.0%
Morning (6:00-12:00)	5384	4365 81.1%	432 8.0%	127 2.4%	265 4.9%	54	75	842	193 3.6%	2 0.0%
Daytime (12:00-18:00)	7173	5386 75.1%	687 9.6%	303 4.2%	609 8.5%	53	49	358	173 2.4%	15 0.2%
Evening (18:00-24:00)	4381	2839 64.8%	454 10.4%	260 5.9%	652 14.9%	60	52	521	172 3.9%	4 0.1%
All Day	17279	12853 74.4%	1596 9.2%	708 4.1%	1548 9.0%	56	56	842	553 3.2%	21 0.1%

# Airport Arrival Performance Comparison

Sorted by airport and summarized by time of day

Date Range: Jun 1, 2007 - Jun 30, 2007



## Airports: Top 30 North American Airports

### ORD O'Hare International Airport - Chicago, IL United States

Arrival Time	Flights	Ontime	Late	Very Late	Excessive	Avg	SD	Max	Cancelled	Diverted
Night (00:00-6:00)	1002	680 67.9%	105 10.5%	57 5.7%	141 14.1%	69	75	547	19 1.9%	0 0.0%
Morning (6:00-12:00)	12769	10377 81.3%	886 6.9%	380 3.0%	793 6.2%	57	64	606	328 2.6%	5 0.0%
Daytime (12:00-18:00)	15005	9446 63.0%	1534 10.2%	833 5.6%	2693 17.9%	75	69	680	444 3.0%	55 0.4%
Evening (18:00-24:00)	9777	4758 48.7%	1002 10.2%	656 6.7%	2468 25.2%	79	66	750	877 9.0%	16 0.2%
All Day	38553	25261 65.5%	3527 9.1%	1926 5.0%	6095 15.8%	73	67	750	1668 4.3%	76 0.2%

### PHL Philadelphia International Airport - Philadelphia, PA United States

Arrival Time	Flights	Ontime	Late	Very Late	Excessive	Avg	SD	Max	Cancelled	Diverted
Night (00:00-6:00)	196	107 54.6%	27 13.8%	16 8.2%	37 18.9%	67	64	301	9 4.6%	0 0.0%
Morning (6:00-12:00)	4609	3537 76.7%	353 7.7%	189 4.1%	387 8.4%	53	49	540	139 3.0%	4 0.1%
Daytime (12:00-18:00)	7010	4468 63.7%	822 11.7%	508 7.2%	1050 15.0%	63	65	569	146 2.1%	16 0.2%
Evening (18:00-24:00)	4930	2344 47.5%	571 11.6%	408 8.3%	1328 26.9%	74	64	680	260 5.3%	19 0.4%
All Day	16745	10456 62.4%	1773 10.6%	1121 6.7%	2802 16.7%	66	63	680	554 3.3%	39 0.2%

### PHX Sky Harbor International Airport - Phoenix, AZ United States

Arrival Time	Flights	Ontime	Late	Very Late	Excessive	Avg	SD	Max	Cancelled	Diverted
Night (00:00-6:00)	95	72 75.8%	9 9.5%	4 4.2%	9 9.5%	61	75	360	1 1.1%	0 0.0%
Morning (6:00-12:00)	6773	5725 84.5%	528 7.8%	127 1.9%	234 3.5%	45	54	623	155 2.3%	4 0.1%
Daytime (12:00-18:00)	6249	4757 76.1%	669 10.7%	271 4.3%	454 7.3%	49	54	717	96 1.5%	2 0.0%
Evening (18:00-24:00)	5173	3403 65.8%	623 12.0%	330 6.4%	712 13.8%	59	56	482	101 2.0%	4 0.1%
All Day	18290	13957 76.3%	1829 10.0%	732 4.0%	1409 7.7%	53	55	717	353 1.9%	10 0.1%

### SAN San Diego International Airport - San Diego, CA United States

Arrival Time	Flights	Ontime	Late	Very Late	Excessive	Avg	SD	Max	Cancelled	Diverted
Night (00:00-6:00)	30	20 66.7%	5 16.7%	1 3.3%	2 6.7%	43	43	144	2 6.7%	0 0.0%
Morning (6:00-12:00)	2517	2257 89.7%	117 4.6%	61 2.4%	62 2.5%	43	42	393	19 0.8%	1 0.0%
Daytime (12:00-18:00)	2874	2314 80.5%	262 9.1%	103 3.6%	172 6.0%	45	40	349	22 0.8%	1 0.0%
Evening (18:00-24:00)	3044	2023 66.5%	312 10.2%	220 7.2%	444 14.6%	59	53	464	43 1.4%	2 0.1%
All Day	8465	6614 78.1%	696 8.2%	385 4.5%	680 8.0%	53	48	464	86 1.0%	4 0.0%

### SEA Seattle/Tacoma International Airport - Seattle, WA United States

Arrival Time	Flights	Ontime	Late	Very Late	Excessive	Avg	SD	Max	Cancelled	Diverted
Night (00:00-6:00)	486	295 60.7%	64 13.2%	52 10.7%	70 14.4%	51	41	242	5 1.0%	0 0.0%
Morning (6:00-12:00)	4377	3646 83.3%	376 8.6%	124 2.8%	188 4.3%	46	54	559	41 0.9%	2 0.0%
Daytime (12:00-18:00)	4889	3573 73.1%	593 12.1%	261 5.3%	401 8.2%	47	46	473	59 1.2%	2 0.0%
Evening (18:00-24:00)	4777	3070 64.3%	601 12.6%	331 6.9%	706 14.8%	60	57	510	61 1.3%	8 0.2%
All Day	14529	10584 72.8%	1634 11.2%	768 5.3%	1365 9.4%	53	53	559	166 1.1%	12 0.1%

# Airport Arrival Performance Comparison

Sorted by airport and summarized by time of day

Date Range: Jun 1, 2007 - Jun 30, 2007

## Airports: Top 30 North American Airports

### SFO SFO International Airport - San Francisco, CA United States

Arrival Time	Flights	Ontime	Late	Very Late	Excessive	Avg	SD	Max	Cancelled	Diverted
Night (00:00-6:00)	393	279 71.0%	43 10.9%	19 4.8%	46 11.7%	61	59	296	5 1.3%	1 0.3%
Morning (6:00-12:00)	4685	3545 75.7%	456 9.7%	227 4.8%	397 8.5%	48	46	537	60 1.3%	0 0.0%
Daytime (12:00-18:00)	4580	3016 65.9%	590 12.9%	287 6.3%	612 13.4%	52	48	419	70 1.5%	5 0.1%
Evening (18:00-24:00)	4435	2797 63.1%	520 11.7%	290 6.5%	748 16.9%	61	56	640	78 1.8%	2 0.0%
All Day	14093	9637 68.4%	1609 11.4%	823 5.8%	1803 12.8%	55	51	640	213 1.5%	8 0.1%

### SLC Salt Lake City International Airport - Salt Lake City, UT United States

Arrival Time	Flights	Ontime	Late	Very Late	Excessive	Avg	SD	Max	Cancelled	Diverted
Night (00:00-6:00)	80	37 46.3%	10 12.5%	6 7.5%	22 27.5%	69	53	233	5 6.3%	0 0.0%
Morning (6:00-12:00)	4313	3799 88.1%	313 7.3%	75 1.7%	103 2.4%	44	68	730	22 0.5%	1 0.0%
Daytime (12:00-18:00)	4759	3770 79.2%	556 11.7%	177 3.7%	223 4.7%	39	35	332	31 0.7%	2 0.0%
Evening (18:00-24:00)	4310	3018 70.0%	533 12.4%	233 5.4%	480 11.1%	55	56	436	42 1.0%	4 0.1%
All Day	13462	10624 78.9%	1412 10.5%	491 3.6%	828 6.2%	48	53	730	100 0.7%	7 0.1%

### TPA Tampa International Airport - Tampa, FL United States

Arrival Time	Flights	Ontime	Late	Very Late	Excessive	Avg	SD	Max	Cancelled	Diverted
Night (00:00-6:00)	105	59 56.2%	13 12.4%	10 9.5%	22 21.0%	70	64	362	1 1.0%	0 0.0%
Morning (6:00-12:00)	2205	1910 86.6%	111 5.0%	65 2.9%	72 3.3%	52	88	727	45 2.0%	2 0.1%
Daytime (12:00-18:00)	3005	2214 73.7%	289 9.6%	153 5.1%	288 9.6%	53	52	725	59 2.0%	2 0.1%
Evening (18:00-24:00)	2616	1483 56.7%	310 11.9%	199 7.6%	589 22.5%	70	60	504	33 1.3%	2 0.1%
All Day	7931	5666 71.4%	723 9.1%	427 5.4%	971 12.2%	62	62	727	138 1.7%	6 0.1%

### YVR Vancouver International Airport - Vancouver, BC Canada

Arrival Time	Flights	Ontime	Late	Very Late	Excessive	Avg	SD	Max	Cancelled	Diverted
Night (00:00-6:00)	112	65 58.0%	20 17.9%	10 8.9%	15 13.4%	54	64	391	2 1.8%	0 0.0%
Morning (6:00-12:00)	2990	2521 84.3%	253 8.5%	86 2.9%	121 4.0%	40	41	421	9 0.3%	0 0.0%
Daytime (12:00-18:00)	3440	2685 78.1%	417 12.1%	147 4.3%	179 5.2%	39	38	421	12 0.3%	0 0.0%
Evening (18:00-24:00)	2121	1575 74.3%	235 11.1%	117 5.5%	180 8.5%	48	44	372	12 0.6%	2 0.1%
All Day	8663	6846 79.0%	925 10.7%	360 4.2%	495 5.7%	43	42	421	35 0.4%	2 0.0%

### YYZ Pearson International Airport - Toronto, ON Canada

Arrival Time	Flights	Ontime	Late	Very Late	Excessive	Avg	SD	Max	Cancelled	Diverted
Night (00:00-6:00)	109	93 85.3%	7 6.4%	0 0.0%	9 8.3%	47	29	125	0 0.0%	0 0.0%
Morning (6:00-12:00)	3479	3078 88.5%	170 4.9%	86 2.5%	126 3.6%	47	49	351	16 0.5%	3 0.1%
Daytime (12:00-18:00)	5747	4325 75.3%	562 9.8%	263 4.6%	548 9.5%	56	58	735	37 0.6%	12 0.2%
Evening (18:00-24:00)	5309	3569 67.2%	659 12.4%	307 5.8%	685 12.9%	55	49	404	85 1.6%	4 0.1%
All Day	14644	11065 75.6%	1398 9.5%	656 4.5%	1368 9.3%	55	53	735	138 0.9%	19 0.1%